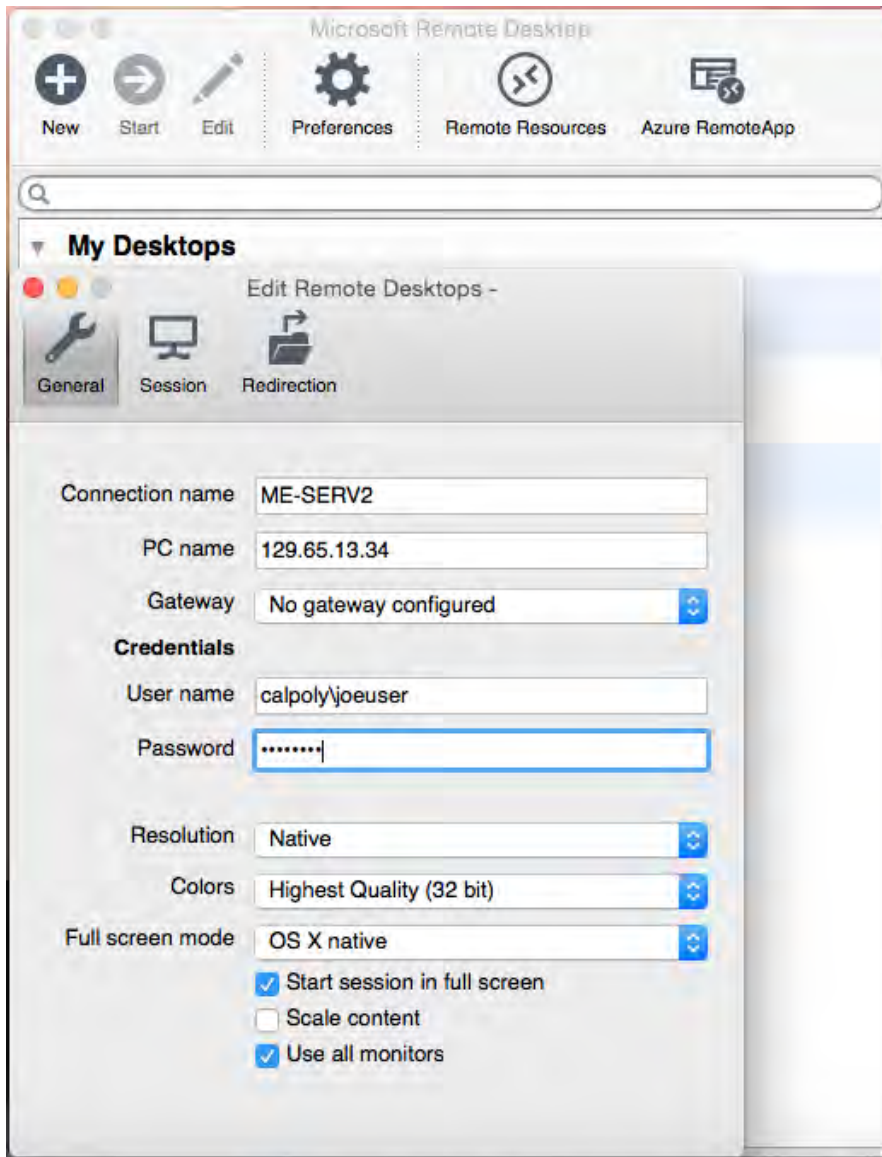


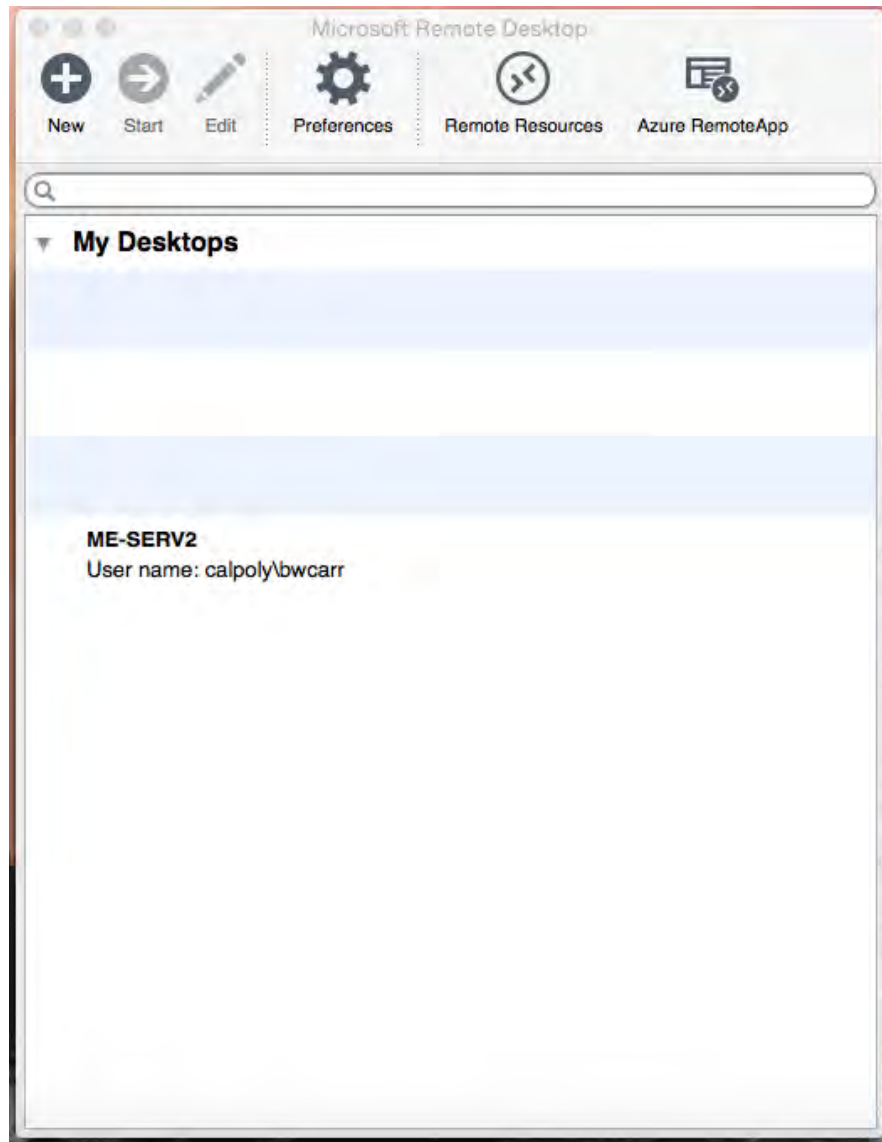
# Remote desktop Mac

- Open the Remote Desktop app from your Launcher
- Click “New”
- In the “PC Name” Field
  - **129.65.13.34** for **Adams,EES,Maple**, and **Matlab** server(ME-SERV2)
  - **129.65.13.37** for **Abaqus, EES, Matlab, Mathematica**, and **Solidworks** server (ME-SERV11)



<\\me-serv5\mesupportfiles\AppleDevices>

- From the toolbar select “File>Close” or press(command+W) keys
- The following window should appear
- Double click on the connection you created to connect to the terminal server



- Accept any certificate prompts (if any prompts occur) and you should connect to the terminal server

<\\me-serv5\mesupportfiles\AppleDevices>